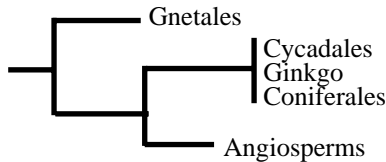


# Review: Phylogeny of Gnetales

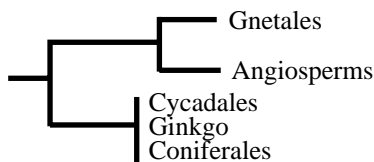
## A. Gnetales



18S + 26S rRNA: Hamby & Zimmer (1992).  
 rbcL: Albert et al.\* (1994); Källersjö et al. (1998).  
 rbcL + atpB + (18S + 26S): Rydin et al. (2002)

Marked\* is according to Doyle (1998)

## B. Anthophyte



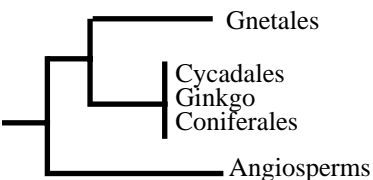
Morph.: Crane\* (1985); Doyle & Donoghue\* (1986, 1992);  
 Laconte & Stevenson\* (1990); Nixon et al.\* (1994); Doyle (1996).  
 18S + 26S rRNA: Hamby & Zimmer (1992).  
 rbcL: Chase et al. (1993); Price (1996).  
 28S rRNA: Stefanovic et al. (1998).

## C<sub>1</sub>. Gymnosp. Uknown



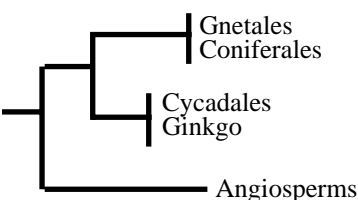
Morph.: Donoghue & Doyle (2000); [Friedman & Carmichael (1995) +  
 Friedman & Floyd (2001), this is a possibility.]  
 Kemi: Gottlieb & Kubitzki (1984); Carnachan & Harris (2000).  
 MADS-box: Becker et al. (2000); Theissen et al. (2000); Winter et al. (1999);  
 LEAFY: Frohlich & Meyerowitz (1997).  
 4,5S + 5S + 5,8S: Troitsky et al. (1991).  
 9149 bases from different genes: Hansen et al. (1999).  
 cpDNA-ligheder: Raubeson (1998) + personal communication.

## C<sub>2</sub>. Gymnosp. First



Legumin: Shutov et al. (1998).  
 rbcL: Haseby et al.\* (1992).  
 chlB: Boivin et al. (1996) - **OBS**: Excl. Angiosperms.  
 cpITS1 + cpITS2: Goremykin et al. (1996).  
 rpoC1: Samigullin et al. (1999).  
 psbA + psbB: Sanderson et al. (2000).

## C<sub>3</sub>. Gymnosp. Conif.-sist.



cpITS1 + cpITS2: Goremykin et al. (1996).  
 18S rRNA: Chaw et al. (1995, 1997, 2000)  
 rbcL (manipuleret): Chaw et al. (2000).  
 mtSSUrDNA: Chaw et al. (2000).  
 cox3: Malek et al. (1996).  
 cox1: Bowe & DePamphilis (1997).  
 3 + 4 genes together (only mt-atpA is new): Bowe et al. (2000).  
 psbA + psbB: Sanderson et al. (2000).  
 5 gener (incl. rbcL + 18S rRNA): Qui et al. (1999).  
 rpoC1: Samigullin et al. (1999).  
 rbcL + cox1 + nad1 + 18S + m-SSU (7705 bases): Gugerli et al. (2001).



















