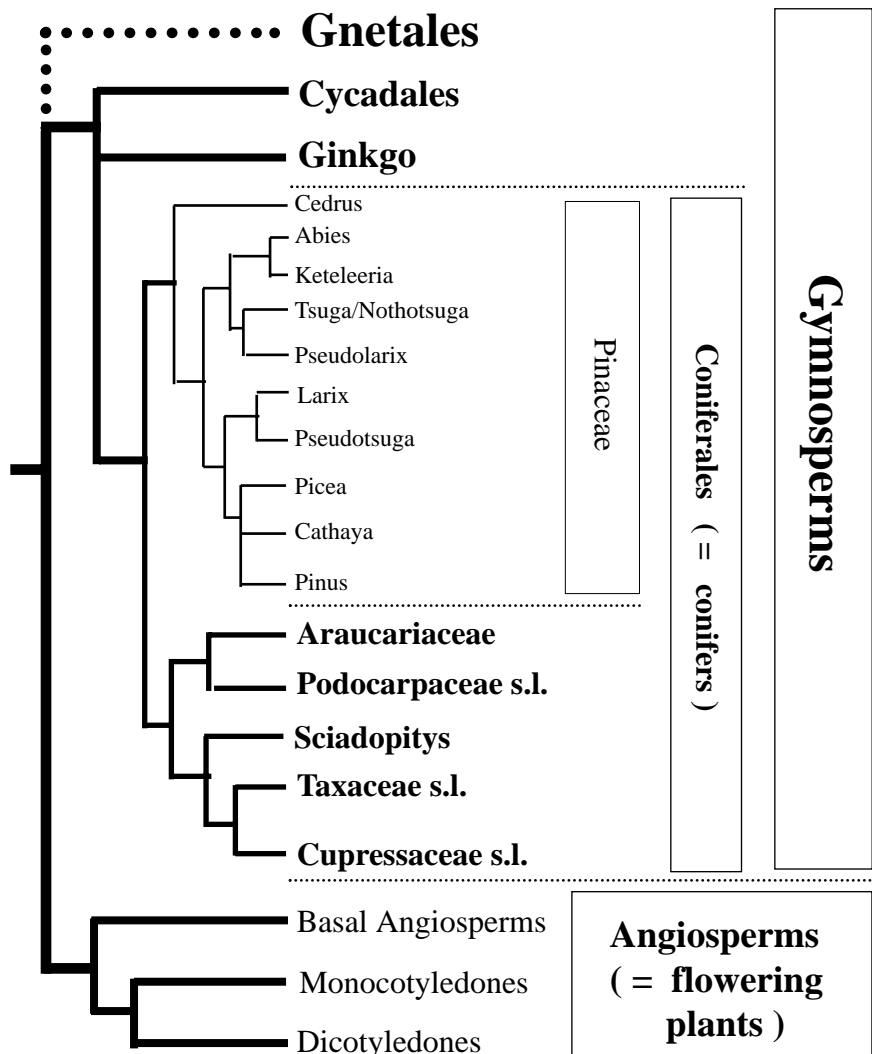


# Phylogeny of Coniferales



## Phylogeny of conifers

in relation to other seedplants

Traditionally the higher plants are divided into the class of Angiosperms (= flowering plants) and the class of Gymnosperms (= plants with naked seeds), but it is not known yet, whether Gnetales is a third class.

The family tree of Coniferales is quite safe.

The genera tree of Pinaceae is not quite as safe, but it is most likely that Cedrus is basal in close connection with the Abies/Keteleeria/Tsuga/Pseudolarix-clade, which is sister to the Larix/Pseudotsuga-clade plus the very weak Picea/Cathaya/Pinus-clade which are sisters.