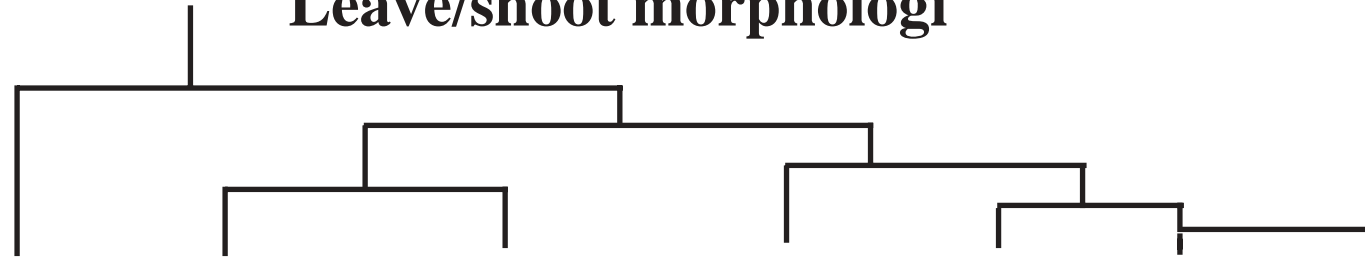


Leaf/shoot morphologi



	Pinaceae		Araucariaceae		Podocarpaceae s.l.		Sciadopitys		Taxaceae s.l.		Taxodiaceae		Cupressaceae s.s.	
	Orig.	Advan.	Orig.	Advanced	Orig.	Advanced	Orig.	Advan.	Orig.	Advan.	Orig.	Advan.	Orig.	Advan.
LEAVES:														
Needles, seedplants	X		X		X		X		X		X		X	
Form: 1-veined needles	X				X some				X		X		(X) Jun.	
2-veined needles	Pinus (x)						X							
1-veined scales					some X									X
Polyveined leaves				X	Nageia (x)									
Deciduous leaves	Larix (x)													
Deciduous shoots	+Pseudolarix										(X)			
Leaves in spirals	X		X		X		(x)		X		X			
Decussate leaves				(x)		(x)					Metaseq. (x)			
Leaves in whorls of 4														X
Leaves in whorls of 3														X
Leaves in fascicles	(x) Pinus													
Leaves in pseudowhorls	X Ced+Lar+PsL							X						
SHOOTS:														
Dwarf + long shoots	X some						X ?							
Long shoots mainly opp.	X some		X											
Opp.+ scat. long shoots									X		X			
Scattered long shoots						X		X						X
Fast lignification	X						X							
Slow lignification				X		X				X		X		X