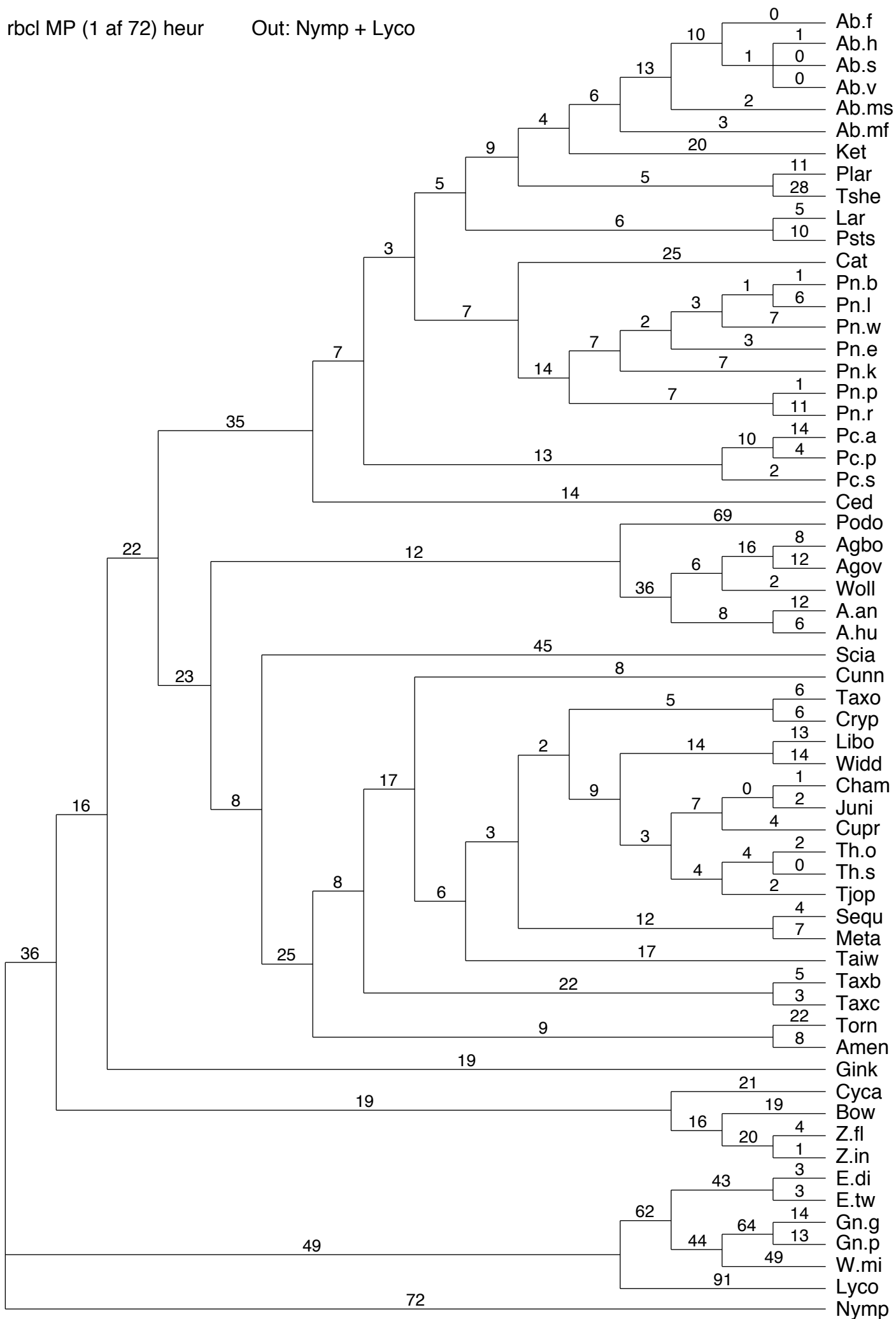
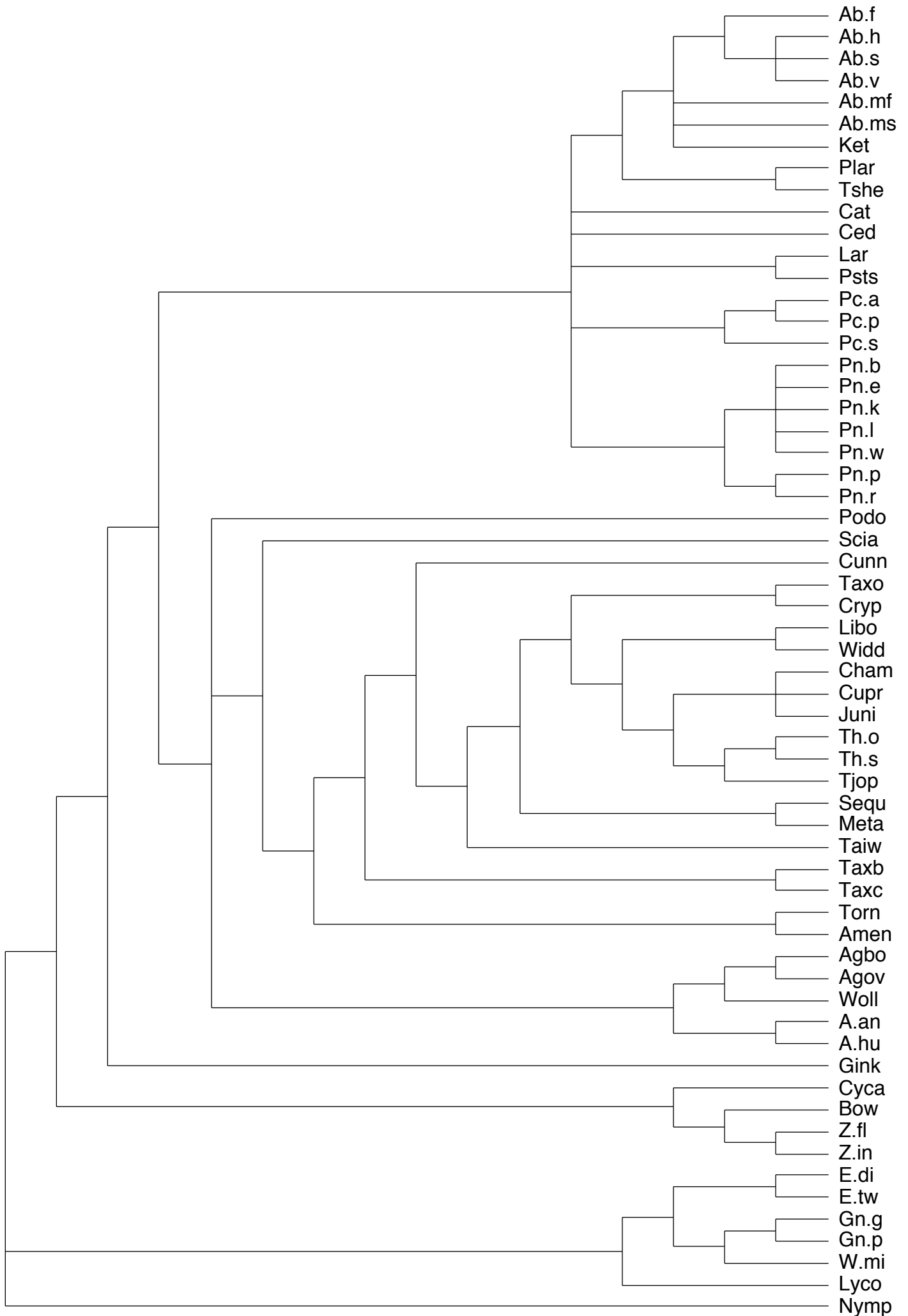


rbcl MP (1 af 72) heur

Out: Nymf + Lyco

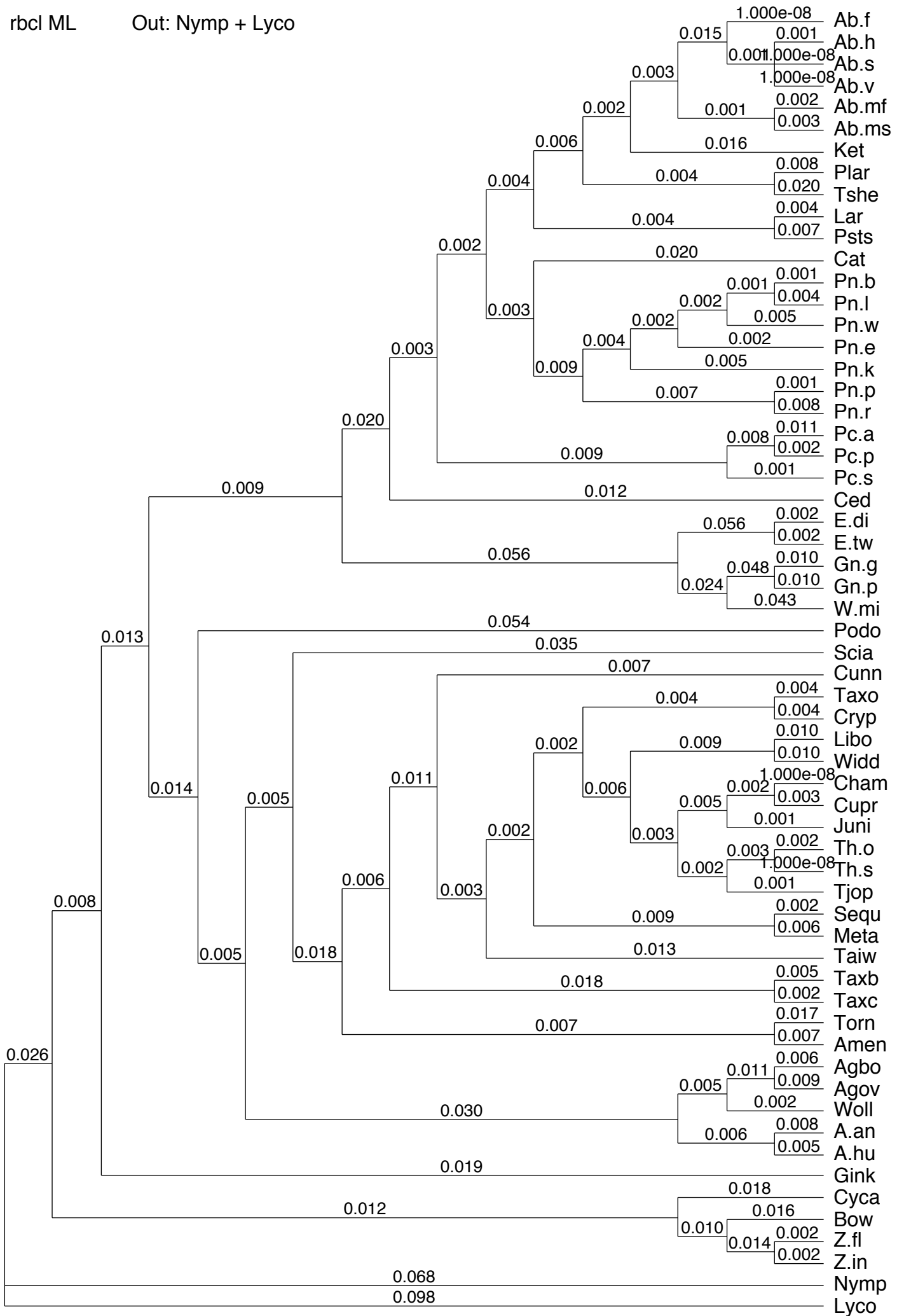


rbcl Strict cons. (72) MP (1000) Out: Nymp + Lyco

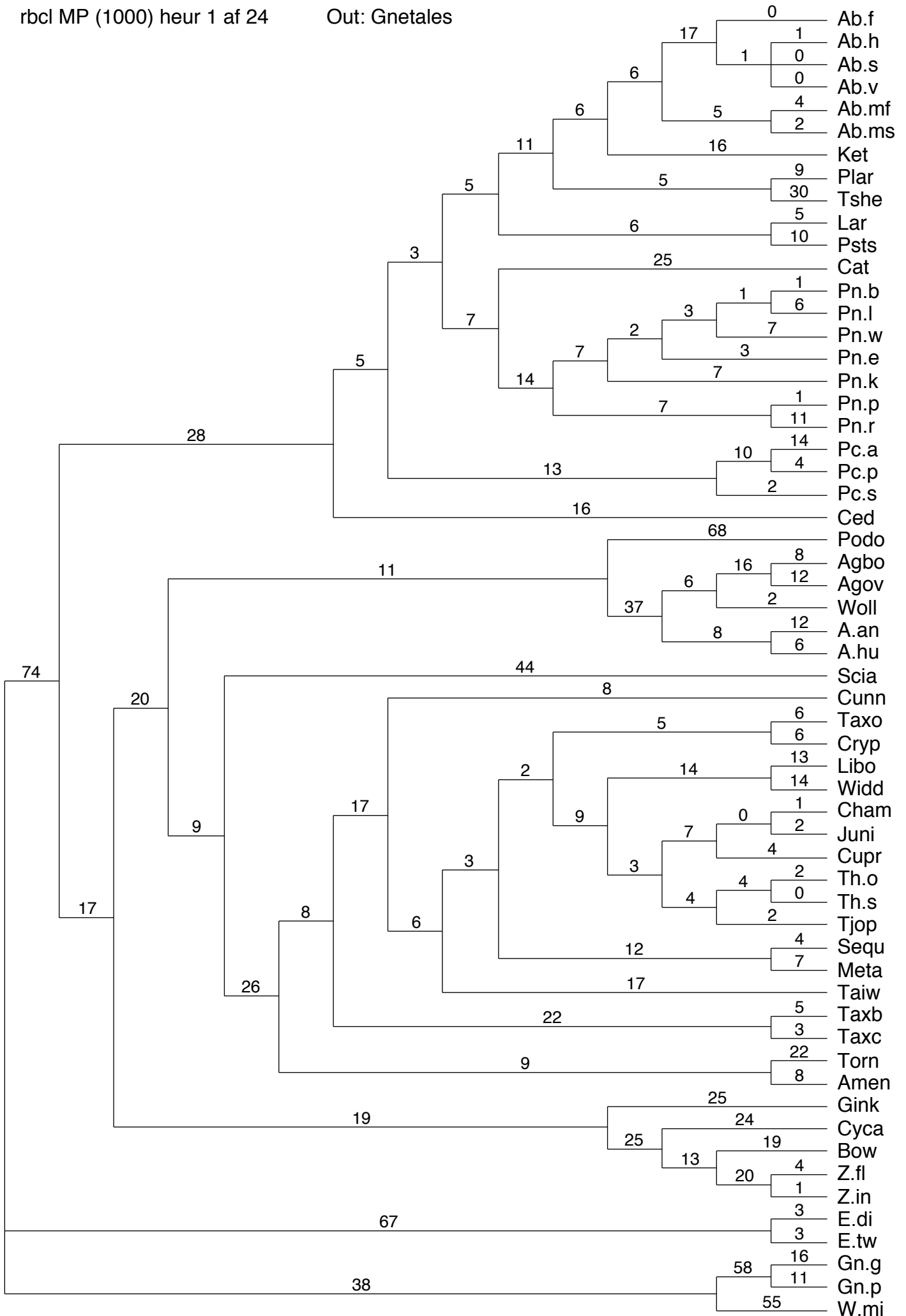


rbcl ML

Out: Nymp + Lyco



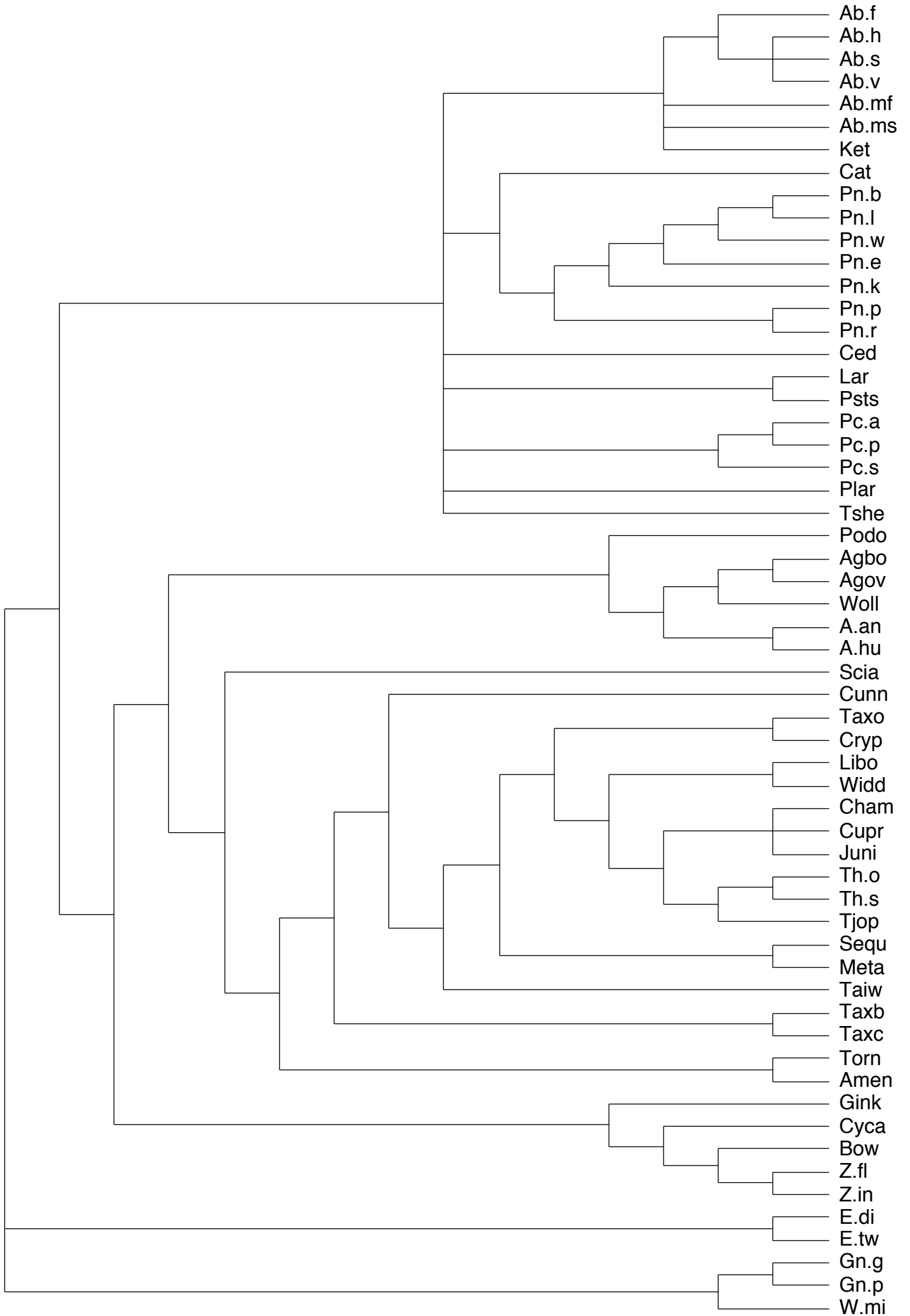




rbcl Strict cons.

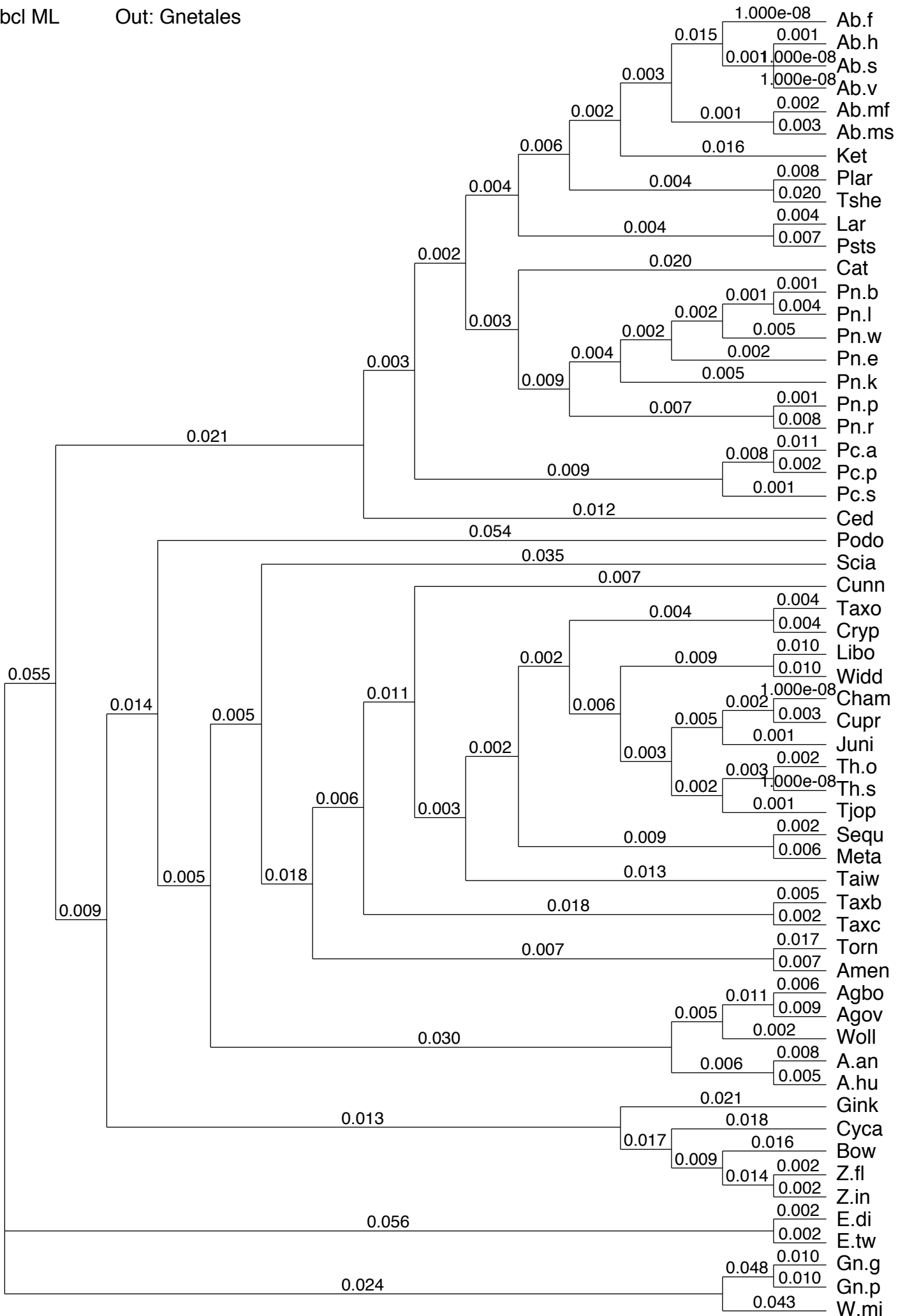
MP (1000)

Out: Gnetales



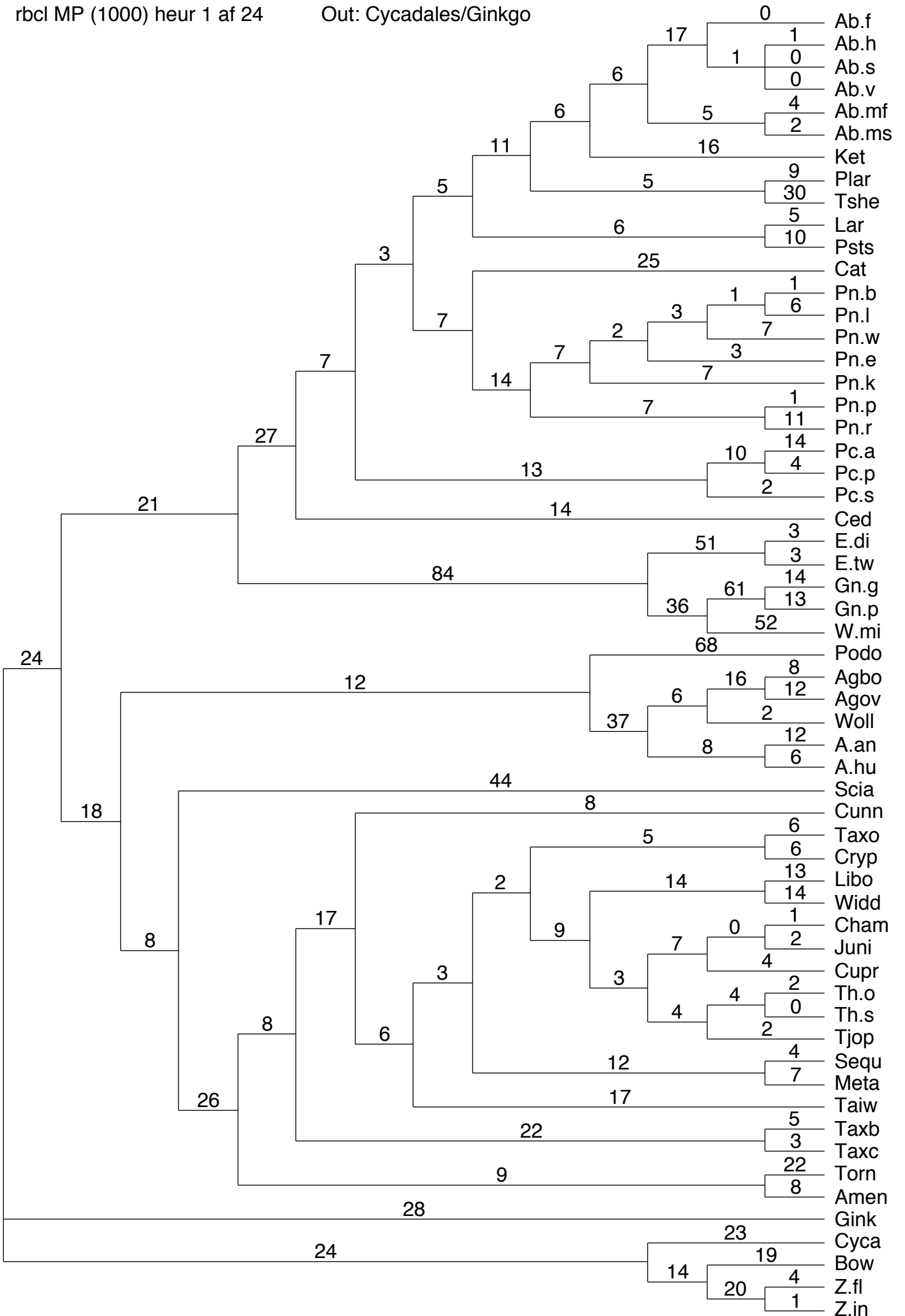
rbcl ML

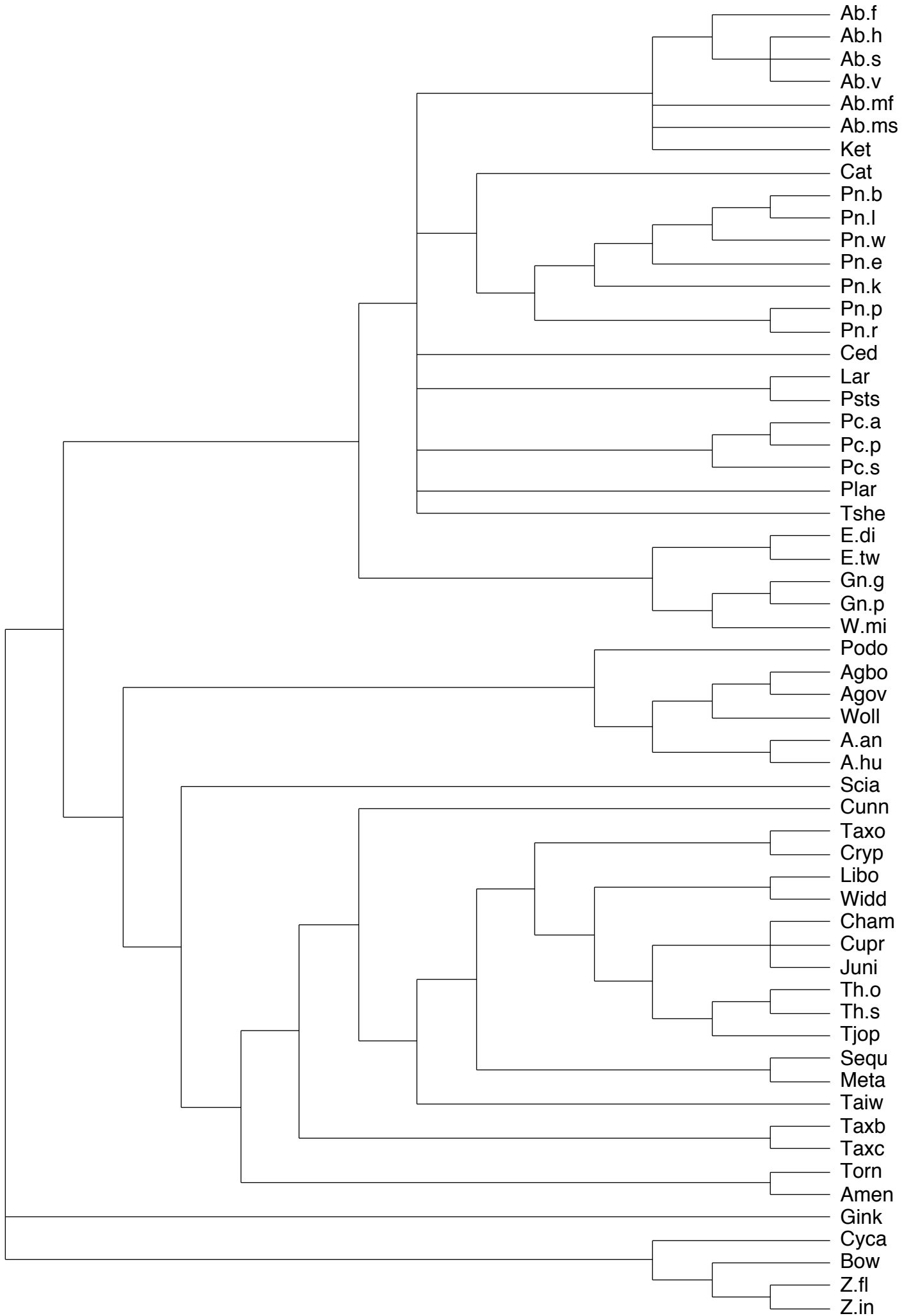
Out: Gnetales



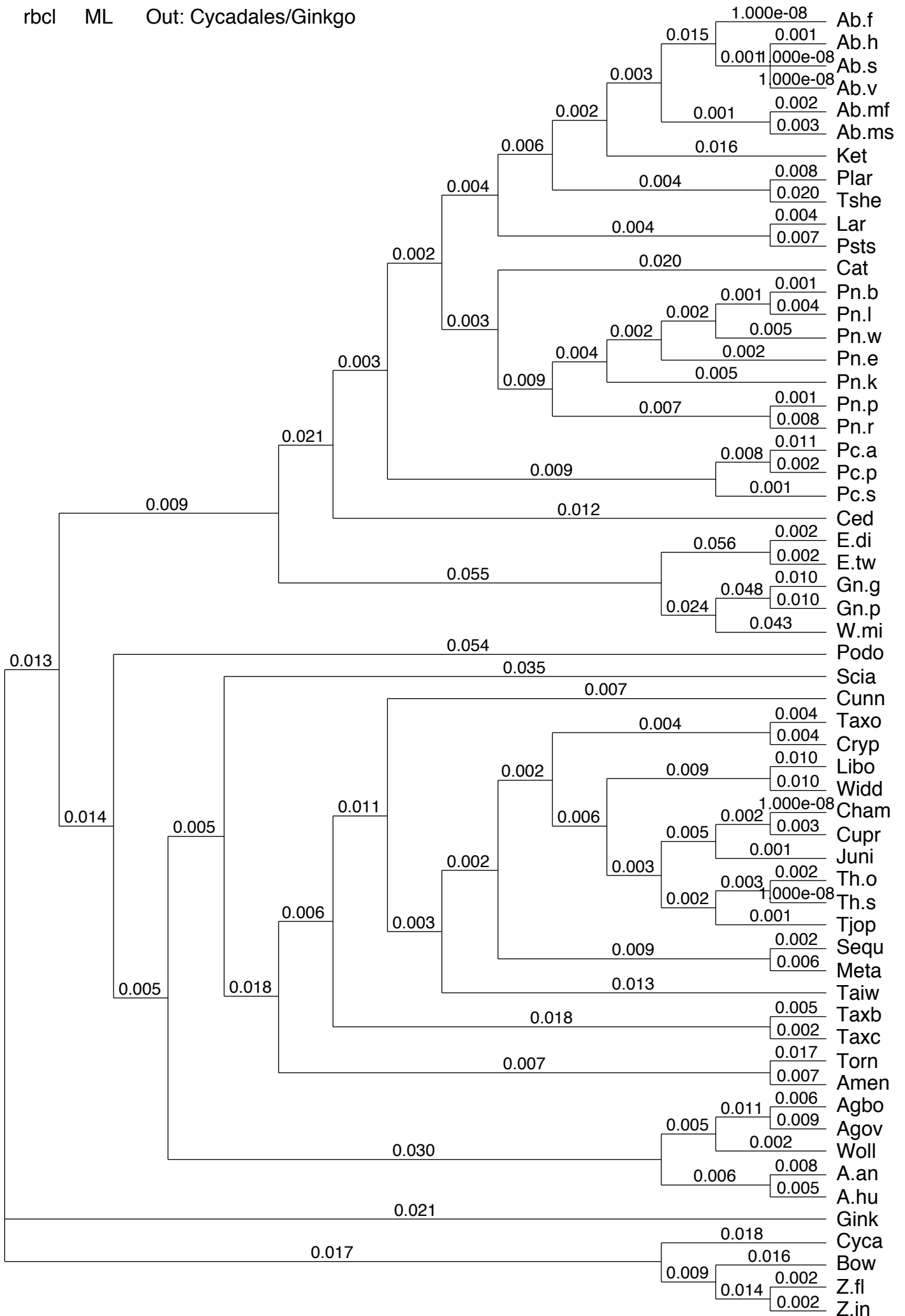


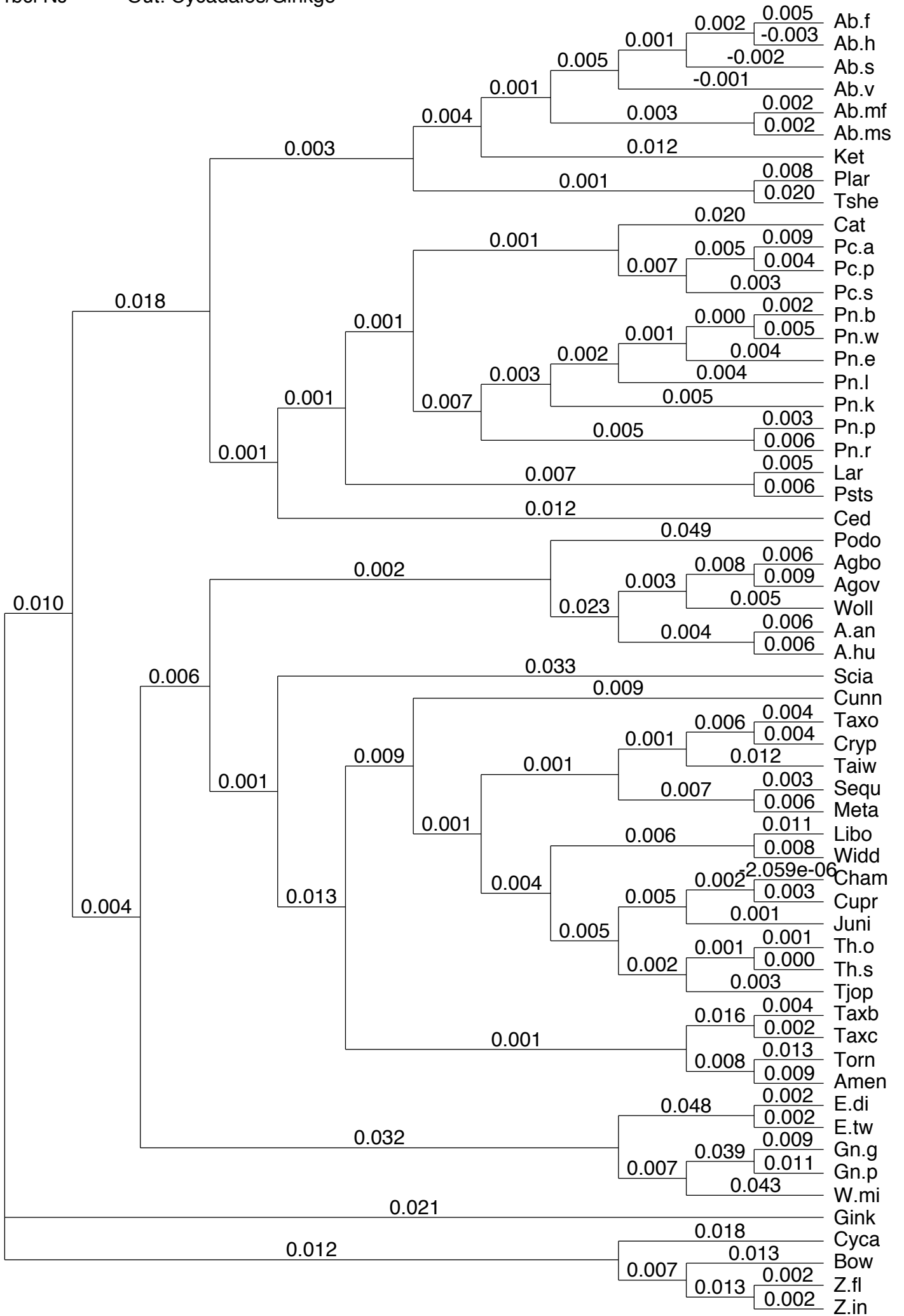






rbcl ML Out: Cycadales/Ginkgo





- Ab.f
- Ab.h
- Ab.s
- Ab.v
- Ab.mf
- Ab.ms
- Ket
- Plar
- Tshe
- Cat
- Pc.a
- Pc.p
- Pc.s
- Pn.b
- Pn.w
- Pn.e
- Pn.l
- Pn.k
- Pn.p
- Pn.r
- Lar
- Psts
- Ced
- Podo
- Agbo
- Agov
- Woll
- A.an
- A.hu
- Scia
- Cunn
- Taxo
- Cryp
- Taiw
- Sequ
- Meta
- Libo
- Widd
- Cham
- Cupr
- Juni
- Th.o
- Th.s
- Tjop
- Taxb
- Taxc
- Torn
- Amen
- E.di
- E.tw
- Gn.g
- Gn.p
- W.mi
- Gink
- Cyca
- Bow
- Z.fl
- Z.in